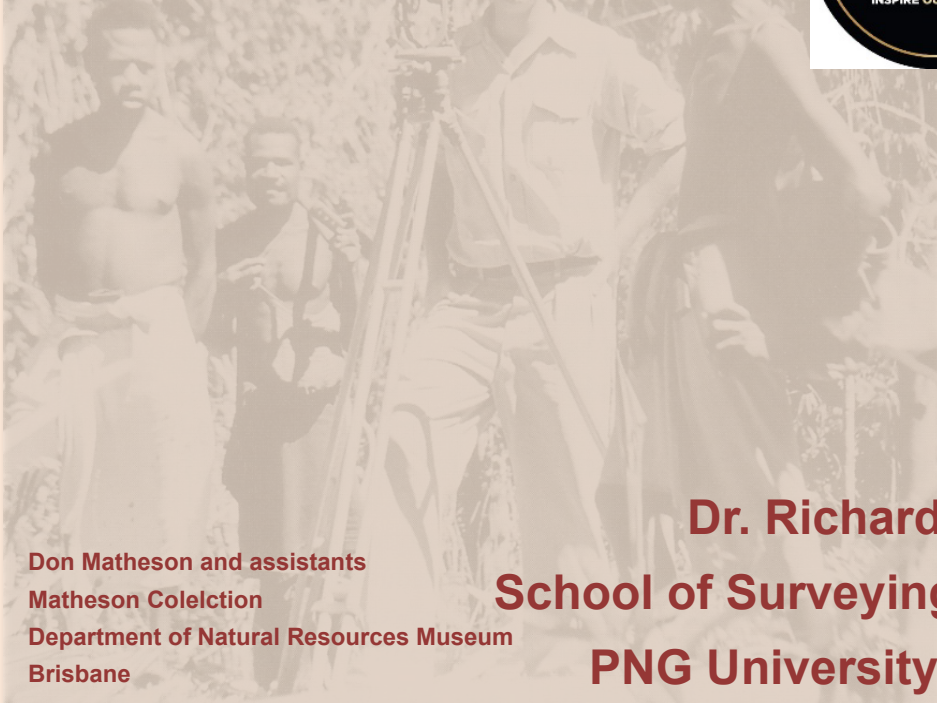
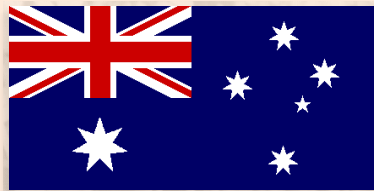


A backsight and foresight perspective of the ASPNG – 1960 to now and beyond



Don Matheson and assistants
Matheson Colelction
Department of Natural Resources Museum
Brisbane

Dr. Richard Stanaway
School of Surveying and Land Studies
PNG University of Technology

BSVY/3 students Unitech Lae
2025
Richard Stanaway

The beginning

4th May 1960



Mastamak, James Sinclair, Crawford House, 2001

Informal start 1958

Foundation members of the Association of Surveyors of Papua New Guinea at their inaugural meeting in Port Moresby, 1960: (left to right) Os Dent, Tom Richards, Allan Midgely, Bruce Sharp, John Ferrier, John Macartney, Des Husband, Graham Matheson, Hugh Bingham, Tom Jackson, Brian Mennis, Clive Sparkes-Carroll, and Don Matheson. [B. Mennis]



**PAPUA NEW GUINEA
UNIVERSITY OF
TECHNOLOGY**



57th ASPNG Survey Congress, Lamana Hotel, Port Moresby, 15-17 October 2025.

1960 – Formation of the A.S.P.N.G

First president (1960-1962) was Clive Sparkes-Carroll
(d. 2014)

**13 Surveyors – Mostly Government surveyors –
All Australian men**

Initial thought was for the PNG group to be a Division of the Institution of Surveyors Australia (ISA) but this was considered impractical.

There were no Territory of Papua and New Guinea (TPNG) born registered surveyors as there was no surveying education for surveyors here in 1960.

ASPNG grew rapidly with more private sector surveyors

First Annual Congress was in 1966



The 1960s – ASPNG Presidents

**Robert (Graham)
Matheson
(1962-1964)**



**Os Dent
(1964-1965)**



**Tom
Richards
(1965-1966)**



**J Williams
(1966-1967)**

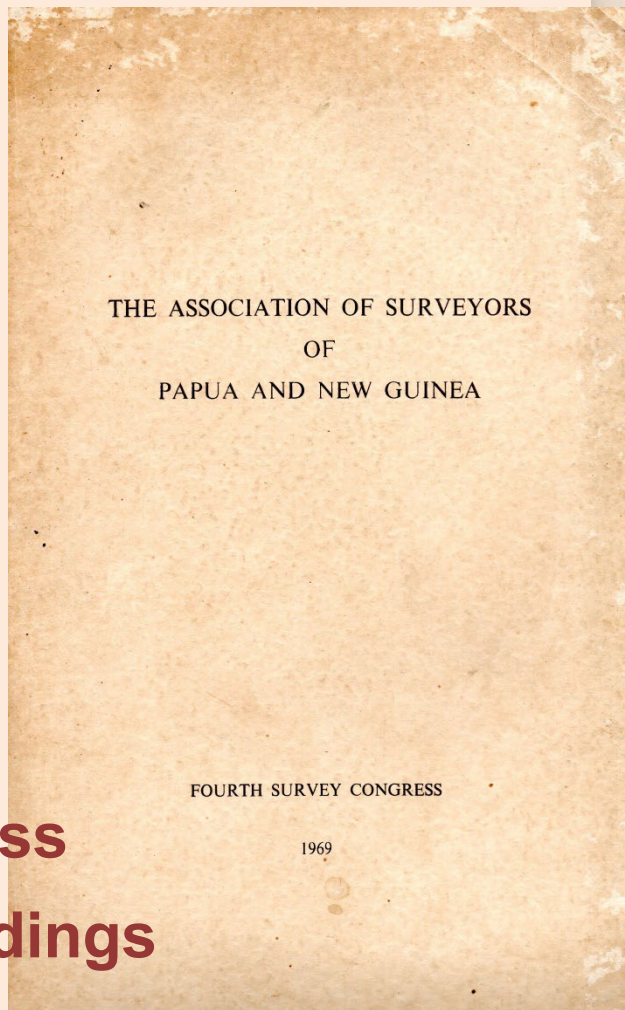


**Tom Jackson
(1967-1969)**



**Tom
Richards
(1969-1970)**

4th Survey Congress 1969



First
Printed
Congress
Proceedings

TABLE OF CONTENTS

FOREWARD	
LIST OF OVERSEAS DELEGATES	
ESTABLISHING THE DIVISION OF SURVEYS IN PAPUA AND NEW GUINEA	
R.G. Matheson	1
THE ROLE OF THE PRIVATE SURVEYOR IN A DEVELOPING COUNTRY	
T.W. Richards	27
THE FORMATION, DEVELOPMENT AND AIMS OF THE ASSOCIATION OF SURVEYORS	
T.C. Jackson	41
THE TRAINING OF SURVEYORS IN PAPUA AND NEW GUINEA	
I. Johnson and A. Bale... ..	57
THE TRAINING OF SURVEY TECHNICIANS IN PAPUA AND NEW GUINEA	
B.J. Mennis	105
URBANIZATION IN PAPUA AND NEW GUINEA - SOME CONCEPTS AND PROBLEMS	
R.J. Belton	113
INTEGRATED SURVEYS	
D.S. Fitzhenry	133
THE FUTURE OF TOPOGRAPHIC MAPPING IN PAPUA AND NEW GUINEA	
B.P. Lambert	145
SOME POSSIBLE TRENDS IN THE PRACTICE OF SURVEYING IN PAPUA AND NEW GUINEA	
M.D. Kellock	155

The fabulous four!



The first four Surveying diplomates on graduation in early 1970: (left to right) Pomaleu Salaiu, Kisokau Pochapon, Mathew Papai, and Alan Bale. [*Journal of the ASPNG*]

The 1970s – ASPNG Presidents

**John
Macartney
(1970-1971)**



**Ken
Matheson
(1971-1972)**



**Michael
Larmer
(1972-1973)**



**Jason
Garrett
(1973-1974)**



**Brian Mennis
(1974-1975)**



**Jeff Tierney
(1975-1976)**



**Allan Bale
(1976-1977)**



**Francis Posanau
(1977-1978)**



**Steven Low
(1978-1982)**



PNG Surveyors Board - 1970



PAPUA AND NEW GUINEA SURVEYORS BOARD
INAUGURAL MEETING 1970

D.M. HUSBAND

M. G. WHISH-WILSON

G.G.D. ARMAN

R.G. MATHESON

C.W. SPARKES-CARROLL

M. D. KELLOCK

J.C. WILLIAMS

Kisokau Pochapon

First national PNG Surveyor-General, December 1974

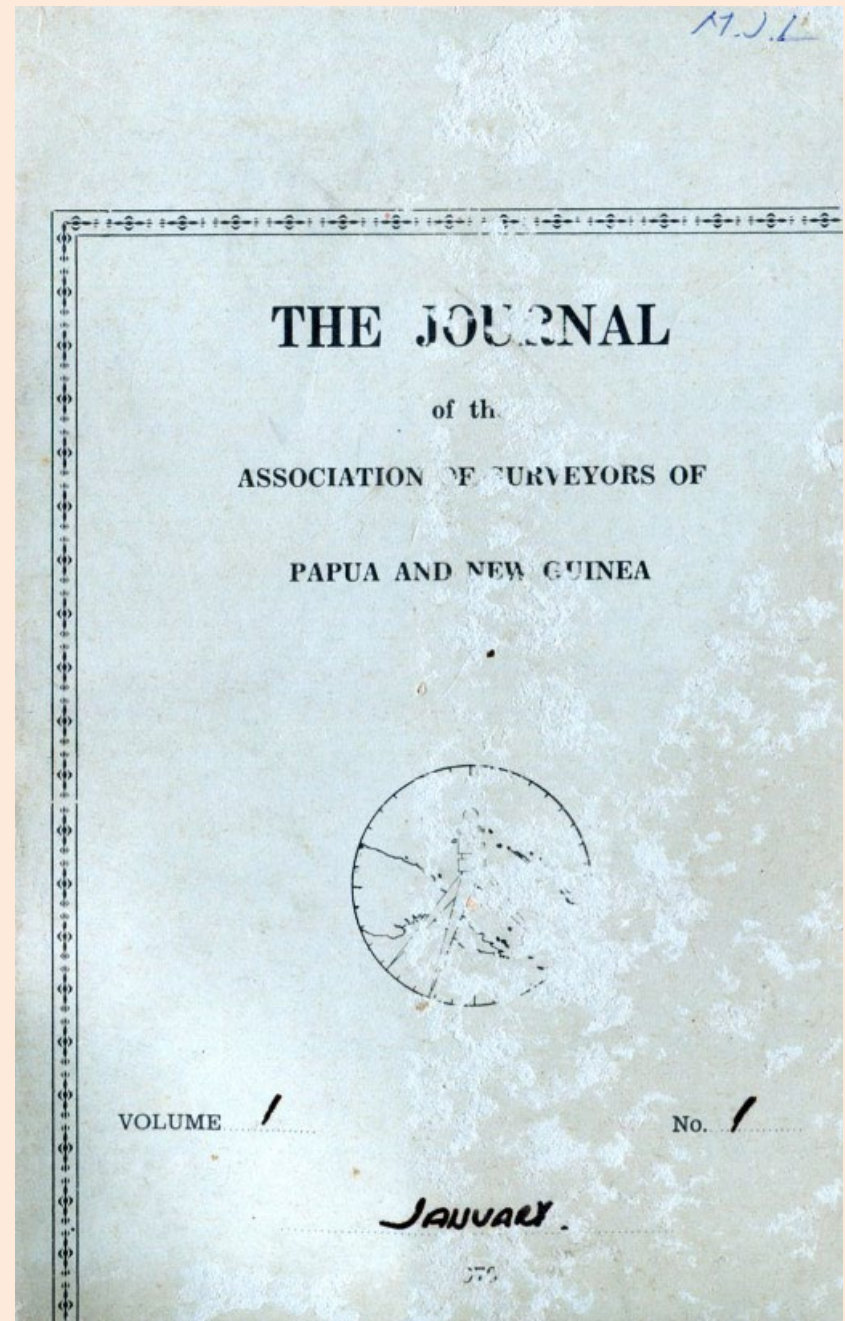
57th ASPNG Survey Congress, Lamana Hotel, Port Moresby, 15-17 October 2025.

The first ASPNG Journal January 1971

MJL's copy!

Acknowledgement to Den
Einstein, PNGUoT for
scanning most of the journals.

Rescued from PNGUoT's
permanent rabis bin.



Annual Congress & Dinner 1971 Rabaul

HIGHLIGHTS AT THE ANNUAL DINNER



Opening of Congress.
J. C. McCartney introduces Mr. M. Toliman.



Left: T. C. Jackson already a tie club member receives the "Stirrers" paddle.



Below, from left: T. W. Richards, President 1969-70, J. J. Garrett, M. C. Annual Dinner, J. C. McCartney President elect 1970-71.

Right: C. W. Sparkes - Carroll is initiated to the "Tie Club" with acclamation.

Below: I. B. Bryning & D. S. Fitzhenry sing the praises of retiring president T. W. Richards.



Annual Dinner 1972 Port Moresby



(From left) John Macartney, Mrs. Betty Macartney, Minister for Internal Finance (Mr. Julius Chan) Congress Manager Graeme Arman, Ken Matheson and Mrs. Chan at the Cocktail Party.



Commonwealth Surveyor General Bill Kennedy "pays up" to Geoff Brown.

Annual Dinner 1973 Unitech, Lae



University of Technology graduate Francis Posanau receives the stirrers paddle from previous holder and outgoing president of the Association Michael Larmer.



Guest speaker at the Congress Opening Ceremony John Sandover, now Vice Chancellor at the University of Technology, pays a fine.



Acting Head of the Surveying Department at the University of Technology, Bruce Forster.

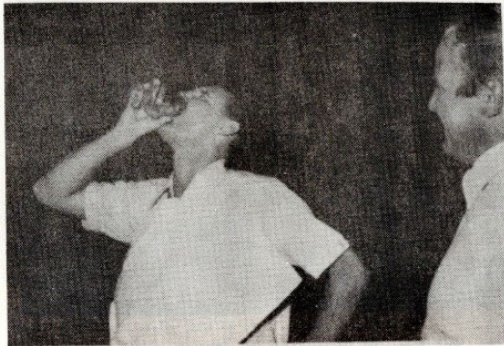
Annual Dinner 1973



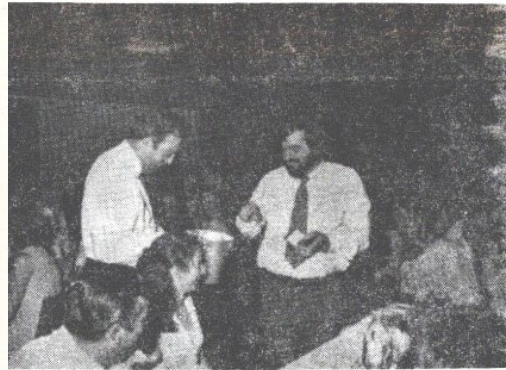
Mr. and Mrs. A.W. Laing from Popondetta.



Mr. and Mrs. Ed Palaitis, Mt. Hagen.



Stuart Scriven Downs the oysters.



Mr. Malcolm Gray, District Surveyor of Mt. Hagen pays a visit.



Peter Angus Leppan, congenial Professor and Head of the School of Surveying from the University of N.S.W.



Congratulations from the incoming president of the Association Jason Garrett.



Getting around – early 1970s

TAA's 12,000 mile Papua New Guinea Network.



50 centres throughout Papua New Guinea on a 12,000 mile network.

100 centres in Australia. TAA serves the lot. Across Papua New Guinea we give you more flights to choose from. Including daily Friendship services between Moresby and all major centres. Plus daily 'Bird of Paradise' T-Jet flights connecting Port Moresby with Brisbane, Sydney, Melbourne, Adelaide and Perth. More flights. More seats. More cargo space.

If you plan to take off soon, keep TAA's 12,000 mile Papua New Guinea network in mind.



No.1-the friendly one

Call your Travel Agent. Or TAA • Port Moresby 2101 • Boroko 5 3541 • Lae 4 3191 • Madang 2478 • Kieta 95 6372 • Rabaul 92 2567 • Goroka 72 1211(8) • Mt. Hagen 52 1301(301) • Wewak 49 319 3533/72

When the going gets tough...

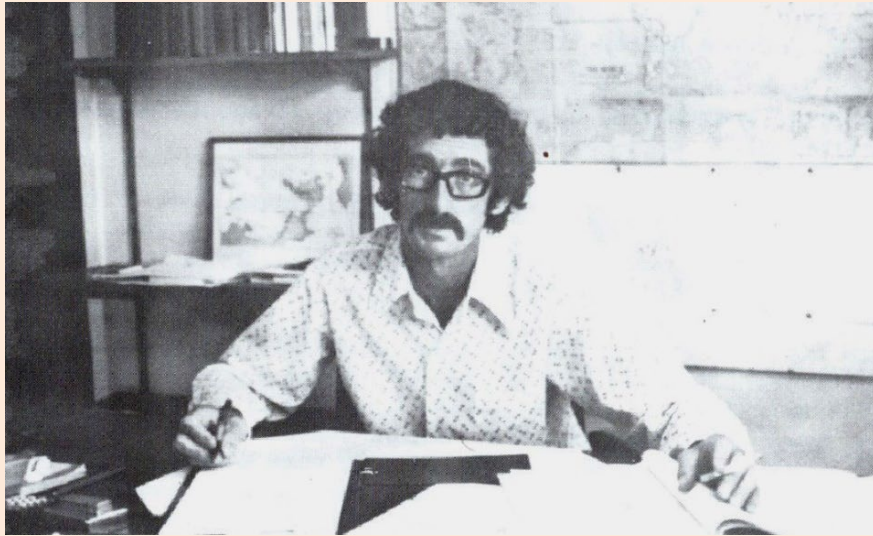
Toyota Land Cruiser Hard Top. It'll take you where you want to go.



TOYOTA LAND CRUISER



PNG University of Technology (Unitech) – Department of Surveying and Land Studies



Mike Kellock, Head of School, 1974

**Student
Practicals
near
Kaiapit**

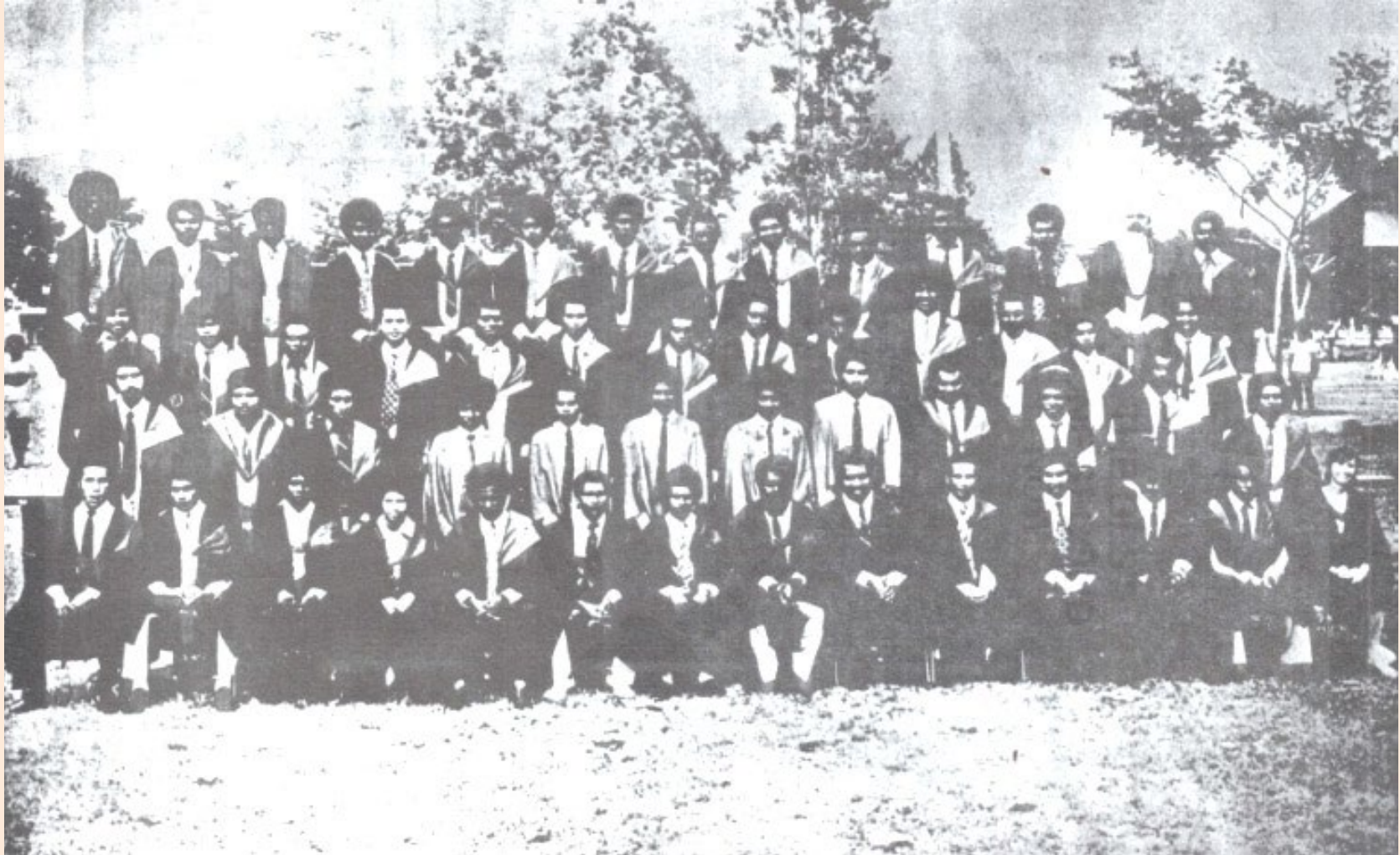


officers have gained.



The Journal of the A.S.P.N.G., September 1974, Vol. 4, No. 3. 26.

PNGUoT (Unitech) – Surveying Graduates 1974



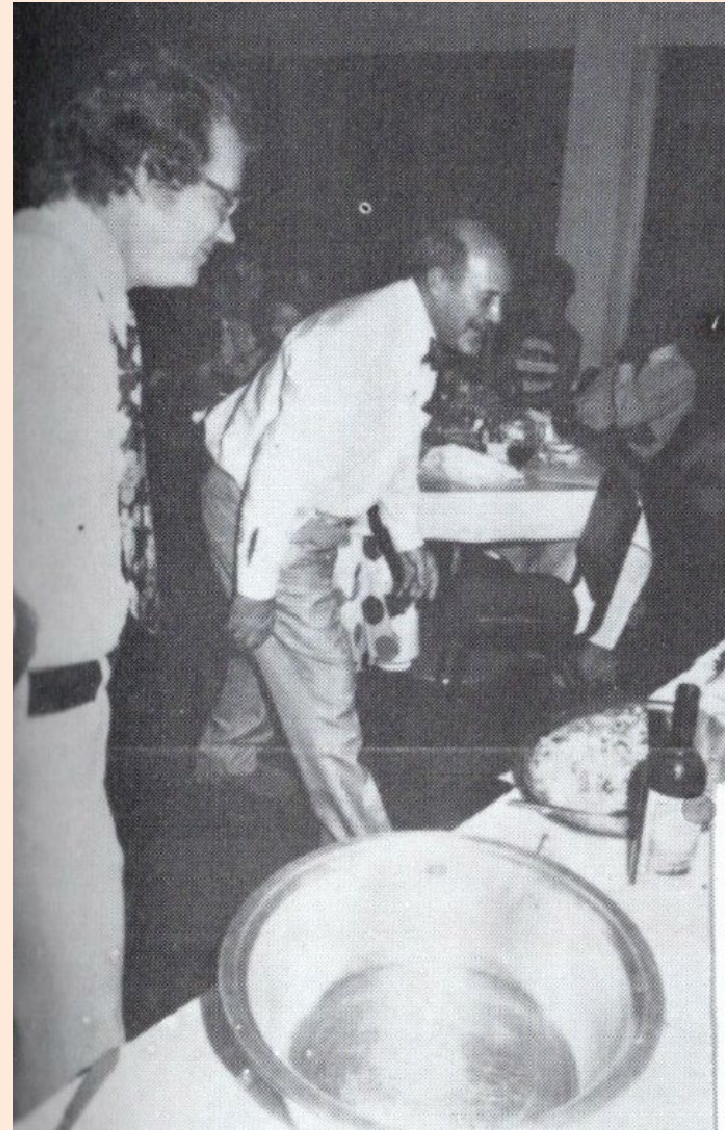
1974 Annual Dinner, Kieta



Jason Garrett (Kisokau Pochapon, ASG on right)

Annual Dinner 1974, Kieta


Bryan McClennan
Tom Richards
Oyster Tie game



Survey Equipment 1970s




Gairo Waigeno – Finschhafen – 1974
Wild DI10 Distomat




Surveying Instruments

FOR ALL APPLICATIONS



**ELECTRONIC
DISTANCE
MEASURING**

DISTOMAT
Range 55 yards to 95 miles.
Digital read out.




**LEVELLING
STAVES**

Precision Invar,
folding, telescopic
and self computing.


**GYRO
COMPASSES &
CLINOMETERS**


Prismatic, geological
and boat compasses.



**TRUE NORTH
INDICATOR**


Attachment for
Standard Theodolite.





LEVELS

For Builders, Surveyors and En-
gineers. Dumpy, Tilting, Automatic,
with or without horizontal circle.



**DRAWING
INSTRUMENTS**

Stainless chromium steel. Individual
instruments or complete sets.

**FIELD BOOKS
PLUMBOBS
RANGING POLES
OPTICAL SQUARES**

**THEODOLITES
and TACHEOMETERS**

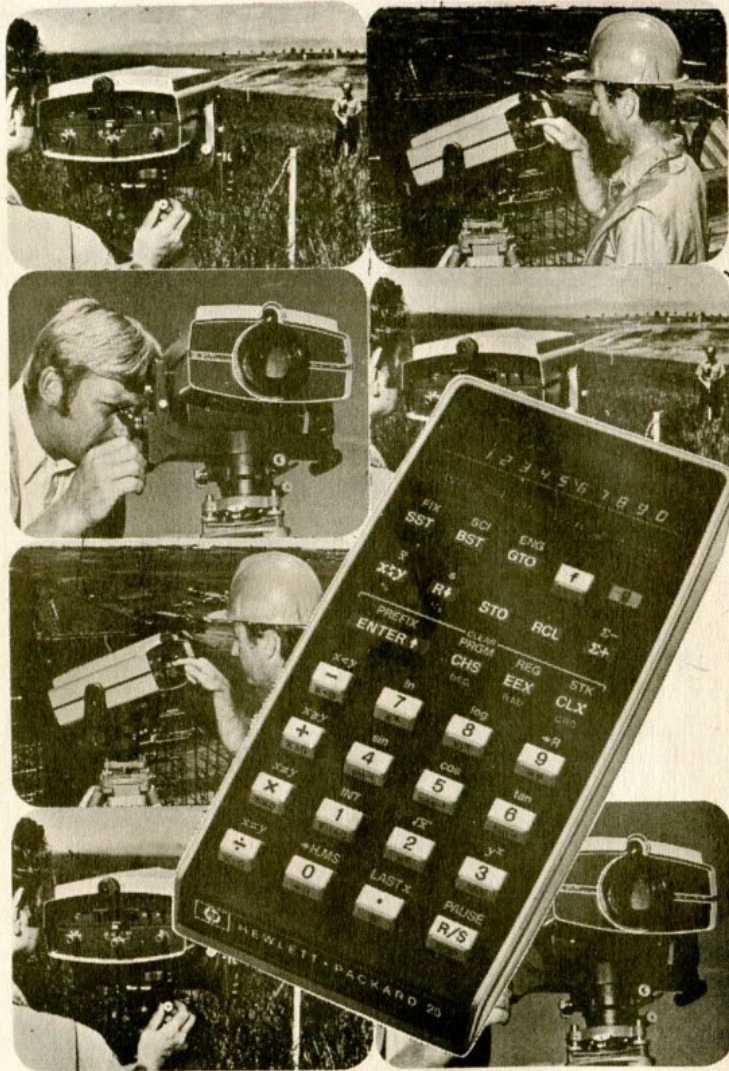
With full range of accessories. **STURDY
CONSTRUCTION** designed for Compass
Traverses, Cadastral Surveys, Triangu-
lation, Building construction, Mining,
Topographic and Astronomical applica-
tions.

YOUR WILD MAN IN PNG.

BRIAN BELL & CO. PTY. LTD.

TURUMU STREET, BOROKO, P.M.
BOX 1228, BOROKO, PAPUA

HP Programmable Calculators – 1970s



**WE'VE GOT THE STOCK!
WE'VE GOT THE PRICE!
WE'VE GOT THE PERFORMANCE!**

Have you got our new HP-25?

Hewlett-Packard's HP-25 has been designed for surveyors, engineers and other professionals who need programmable calculator power. It has:-

- 49 Steps Fingertip Programming
- 8 Storage Registers
- Select: Decimal-Scientific-Engineering Notation
- "Pause" Feature in Program
- 10 Digit Display — 8 plus 2 Exponent
- Σ^+ , Σ^- Statistical Keys
- New Fast Charge Battery Pac

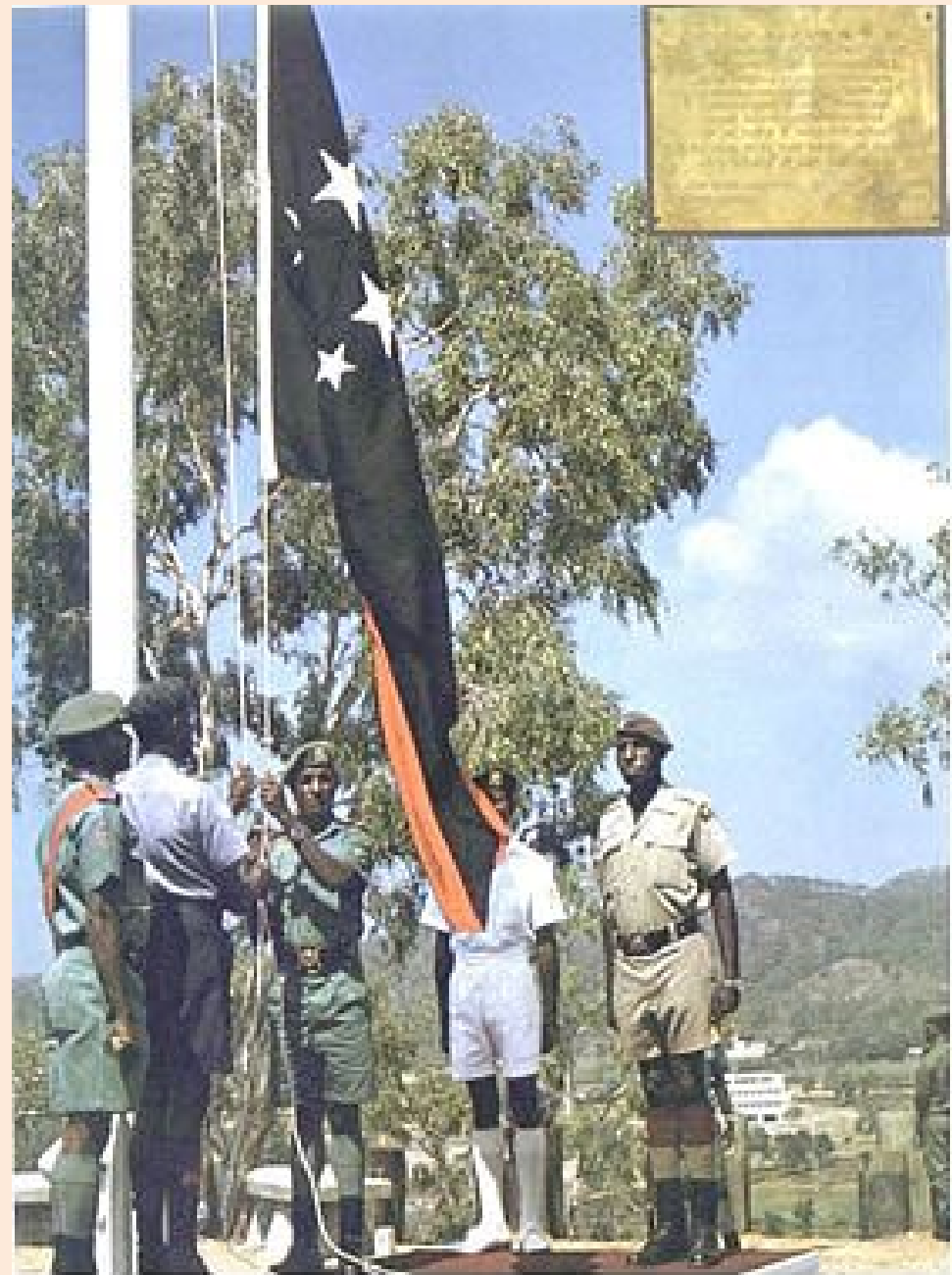
HEWLETT  PACKARD

Sales and service from 172 offices in 65 countries.
Australia, 31-41 Joseph Street, Blackburn, 3130, Victoria. Telephone 89 6351. Other Offices: Adelaide, Brisbane, Canberra, Perth and Sydney. Also Auckland and Wellington, New Zealand.

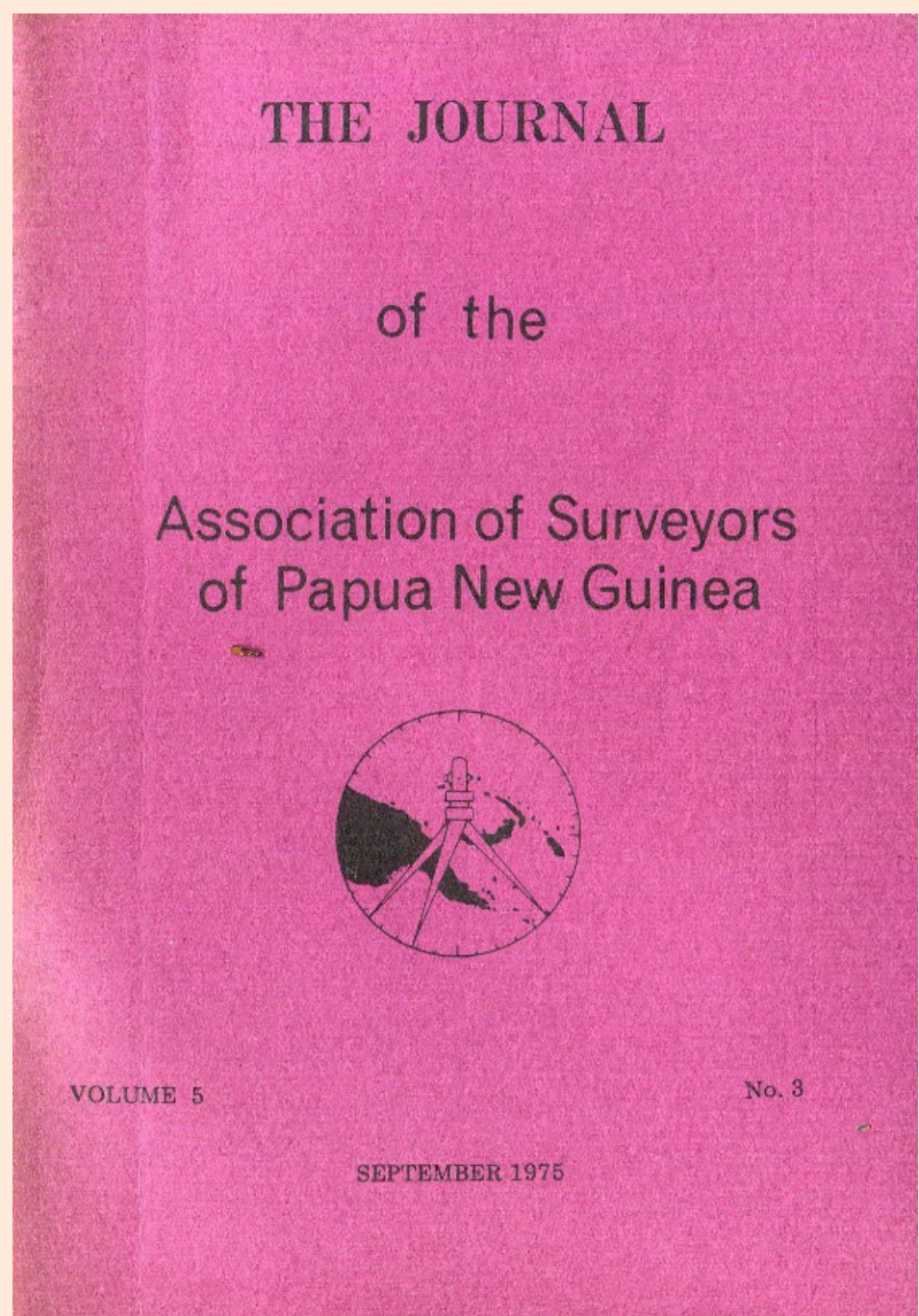
Fill out the coupon below.
I'd like more information on the HP-25.
Here's my order for the HP-25.

Name
Address
Telephone Code
30552R 9080AR

16th September 1975 Independence



ASPNG Journal – September 1975



Survey Technology at Independence 1975



AFTER YOU PURCHASE AN AGA GEODIMETER MODEL 12 YOU CAN THROW YOUR CHAIN AWAY.



- TO OPERATE**
1. Point at target
 2. Check display reads 888.888
 3. Stroke start button
 4. Wait 15 seconds, then write down distance

WHY THE MODEL 12?

The AGA GEODIMETER MODEL 12 has been designed for any Surveyor, Technician or Engineer who is engaged in chain/tape measurements. It is now quite uneconomical for most work to use a chain, as it only requires thirty seconds to take an AGA GEODIMETER MODEL 12 out of its carrying case, clip it on to any Theodolite and obtain an accurate measurement even on very short lines.

WHO DESIGNED THE MODEL 12?

When AGA decided that an electronic distance measurer was required to replace the Survey Chain, AGA's 25 years of experience in E.D.M. equipment and the experience and thoughts of Surveyors throughout the world, produced the concept of the AGA GEODIMETER 12.

WHO WAS THE MODEL 12 DESIGNED FOR?

AGA have designed THE MODEL 12 GEODIMETER for any Surveyor/Technician/Engineer in—
1. The small survey practice dealing only in identification,

- peg-out and similar small survey jobs.
2. Large survey firms running up to ten or more survey parties. We believe each survey party will now be operating uneconomically pulling a chain/tape.
3. Survey sections in Government Departments, Educational Institutions and Construction Companies.

COMPARED WITH CHAINING.

We sincerely believe that every survey party should be equipped with an AGA GEODIMETER MODEL 12 and we are calling THE MODEL 12 GEODIMETER the "NO MORE" instrument. Compared with chaining—

1. NO MORE worries about whether the chain is still "in standard".
2. NO MORE going back to re-chain lines.
3. NO MORE head scratching if you differ with the subject plan—because you're right—first time.
4. NO MORE wasted hours of excessive cross checking on construction sites.
5. NO MORE spending one day getting 60 metres through a scrubby gully.
6. NO MORE bashing sub-division pegs over to adjust

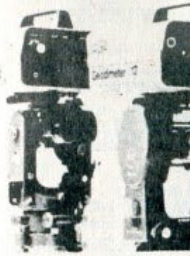
- that accumulated misclose.
7. NO MORE broken chains.
8. NO MORE trouble measuring thru

AND COMPARED WITH YOU E.D.M.:

1. NO MORE carrying 23 kg (50 lb.)
2. NO MORE setting out by success
3. NO MORE peering into boxes on
4. NO MORE nailing, zeroing or cut
5. NO MORE hours lost training op
6. NO MORE lost hours in servicing
7. NO MORE heaps of prisms.
8. NO MORE displays that are hard

AND WHY ALL THE "NO MO

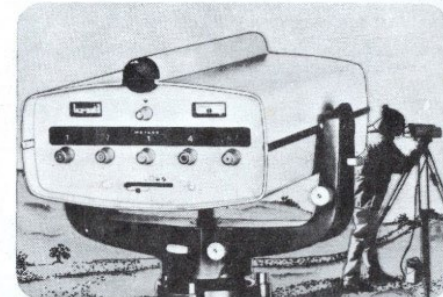
- The AGA GEODIMETER MODEL 12
1. Has an **all up weight** of 2.8 kg lb
2. Fits on the telescope of **any The**
3. Has **no eccentric corrections** be axes height (0.4 mm at 10 metres).
4. Has a **continuous measuring** eye measure to a target moving up to 5 therefore set-out efficiently—obtai



AGA PRODUCTS AUSTR

For demonstrations or further info
SYDNEY: 275 Harbord Rd, Brook Cables Agafaros Sydney, **MELBOU** 81 5527. **ADELAIDE:** K. W. Mayer **BRISBANE:** Herga & Co., 21 Jeay **PERTH:** Associated Instrumentatic

MEASUREMENT & COMPUTATION: WORKING FOR YOU—YOUR WAY



If you look into the HP3800B Distance Meter you'll save more than time, money and mistakes.

You'll also save your back, because the HP 3800B has been constructed to be taken anywhere, without weighing a ton. The HP 3800B gives Australian surveyors measurements in metrics at a price and performance that should gladden any surveying organization. Its rugged design lets any measurement to be executed in two minutes, over a range of up to 3km. And besides general surveying work, the HP 3800B can also be used to detect and measure sway in buildings and other large structures.

The HP 3800B Distance Meter is one investment that will pay for itself over and over again.

I'd like more information on the HP3800B.
 I'd like a demonstration.
 I'd like more information on HP's surveying calculators.

Name _____
Address _____
Postcode _____
Publication _____ 90650



Sales and service from 172 offices in 65 countries. Australia: 31-41 Joseph Street, Blackburn, 3130, Victoria. Telephone 89 8351. Other Offices: Adelaide, Brisbane, Canberra, Perth and Sydney. Also Auckland and Wellington, New Zealand.

The Journal of the A.S.P.N.G., September 1975, Vol. 5, No. 3.

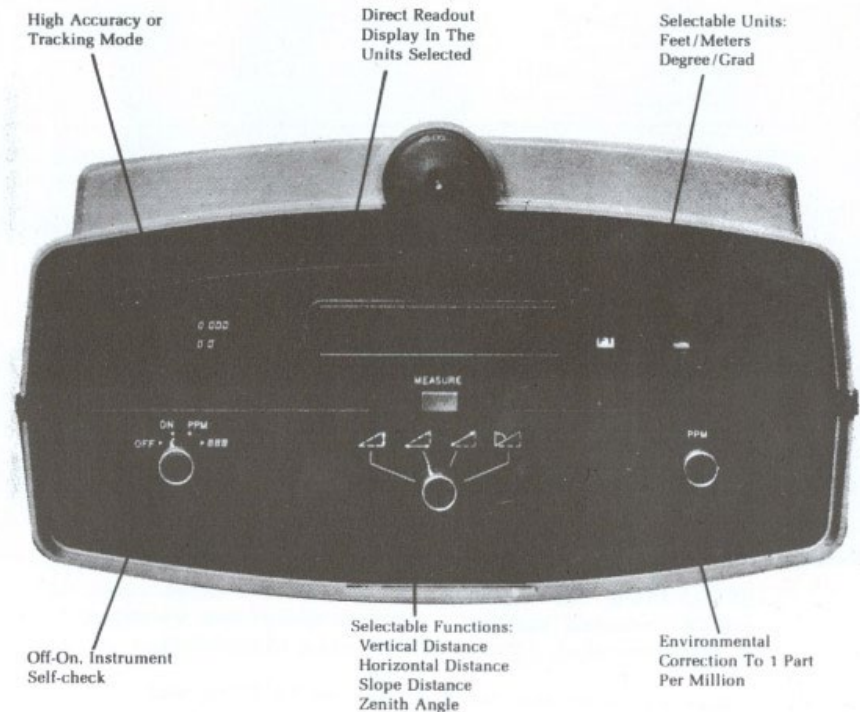


1975-1976 The first total stations

Hewlett Packard HP3810A

New Total Station.

Angle and automatic horizontal
distance measurements
from one instrument.



1976

Graduand Dinner, Huon Gulf Motel, Lae

ASSOCIATION DINNER FOR THE 1975 GRADUANDS
Held at the Huon Gulf Motel, Lae.

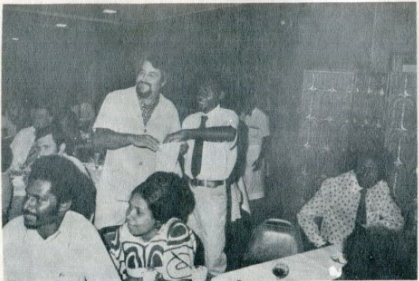


1975 Annual Dinner Port Moresby

TENTH SURVEY CONGRESS PHOTOGRAPHS



Jeff Tierney in a persuasive manner.



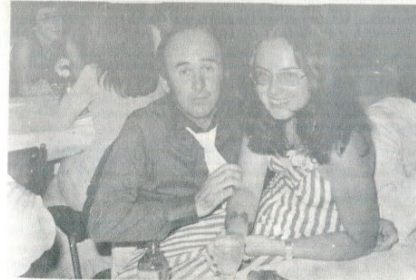
Paulus Breria pays his fine.

The Journal of the A.S.P.N.G., September 1975, Vol. 5, No. 3. 38.

TENTH SURVEY CONGRESS PHOTOGRAPHS



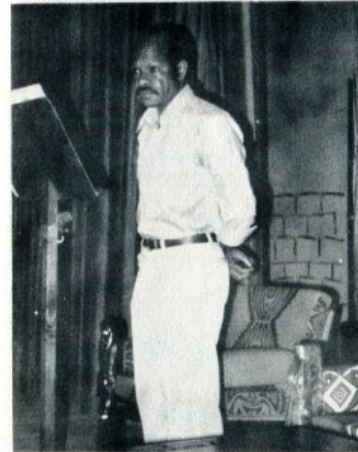
The Annual Dinner gets under way.



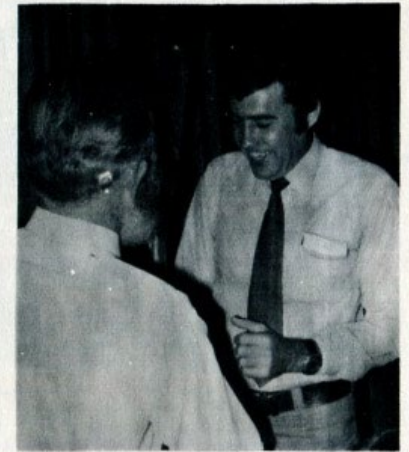
Mick Larmer and Lady Surveyor, Myra Machin from A.C.T. getting to know one another.

The Journal of the A.S.P.N.G., September 1975, Vol. 5, No. 3. 39.

TENTH SURVEY CONGRESS PHOTOGRAPHS



The Minister for Lands, the Rt. Hon. Thomas Kavali opens the 10th Congress at the Cultural Centre, Waigani.

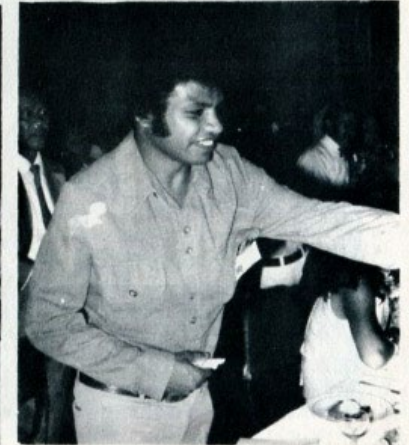


Dan Fitzhenry lives up to his reputation as a stirrer by mixing the claret and oysters with the reverse end of his paddle.



Graham Kendall enjoying a glass of claret and oysters.

The Journal of the A.S.P.N.G., September 1975, Vol. 5, No. 3.



Lionel Paisawa, a graduate of the University of Technology pays up.

35.



1979 Annual Dinner Port Moresby

Francis
Posanau



Theodist – 1979 products



Reprographic Equipment & Supplies

- GAF Diazo Sensitised Papers
- GAF Reproducible Polyester Films and Papers
- GAF Diazo Specialities
- GAF Diazo Printers

Drawing Office Equipment

- Drafting Machines
- Drawing Boards
- Stands
- Stools
- Light Tables
- Plan Filing Equipment

Drafting Materials & Supplies

- GAF Drafting Films • Tracing, Cartridge and Detail Media • Sectional Pads and Materials • Pre-printed drawing sheets
- GAF Simofoil Self-adhesive Protective Film
- Ariel Electric Erasing Machines
- Pantographs, Planimeters, Lettering Sets

CONTRACT DRAFTING SERVICE

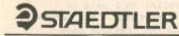
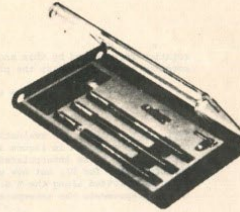
PLAN PRINTING SERVICE

THEODIST PTY LTD.

SURVEY & DRAFTING EQUIPMENT
Paradise Arcade, Tabari Place,
P.O. Box 2437, Port Moresby.
Phone: 25 3897



**PEN SETS
REPLACEMENT NIBS
STENCILS**



DRAWING EQUIPMENT



**HAND BEARING
COMPASS
OPTICAL READING
CLINOMETER
SHIPS COMPASS**



SURVEY CHAINS

TAPES — P.V.C. & STEEL

OFFSET TAPES

**ALUMINI
STAVES**

The Journal of the A.S.P.N.G., September 1979 Vol. 9, No. 3.

— 34 —

The Journal of the A.S.P.N.G., Sept

— 35 —

Logically, the new Hewlett-Packard Series E have no equal. The price of excellence has never been lower.

With HP's new line of scientific, engineering, and business calculators — the Series E — excellence becomes available at a more affordable price.

Like their predecessors, the Series E calculators have HP's user-heralded RPN logic for fast, efficient problem solving that has no equal, literally and figuratively.

New conveniences include larger LED displays for improved readability, commas inserted between thousands, a new level of accuracy, and a built-in diagnostic system that tells you: 1) when you've performed an incorrect operation; 2) why it was incorrect; and 3) if the calculator isn't working.

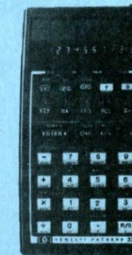
Each calculator is accompanied by a complete, modular documentation system.



HP-31E
Scientific



HP-32E
Advanced Scientific
with Statistics



HP-33E
Programmable
Scientific



HP-37E
Business
Management



HP-38E
Advanced Financial
Programmable

HEWLETT PACKARD

THEODIST PTY LTD.



The 1980s – ASPNG Presidents

Skerry Palanga
(1982-1983)



Pomaleu Salaiau
(1983-1985)



Francis Posanau
(1985-1988)



Adelbert Alois
(1988-1992)

1982 Annual Dinner Port Moresby



Enjoying the annual get-to-gether Adelbert Alois, Jerry Sipuman, Neil Pullar and Pomaleu Salaiau.



What! The beers off?
Jeff Tierney, Alan Dunnley, Sherry Palanga and Rodger Dwyer seem to be saying.



1986 Annual Dinner Lae



Institution Surveyors Australia President David Lorschky addressing Annual Dinner.

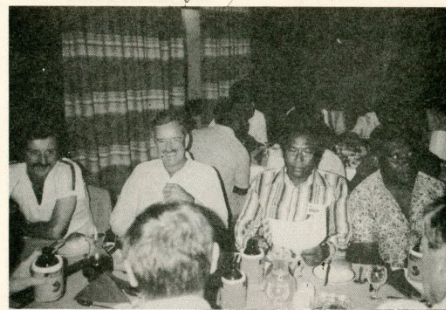


Carson, Miller & Co. prepare to supp.

54.



Ian Sparks, Bill Harvey & friends



Fred Pratt gets the Joke Adelbert Alois & Tony Luben not so sure.

55.



John Pengul heads up a good team.

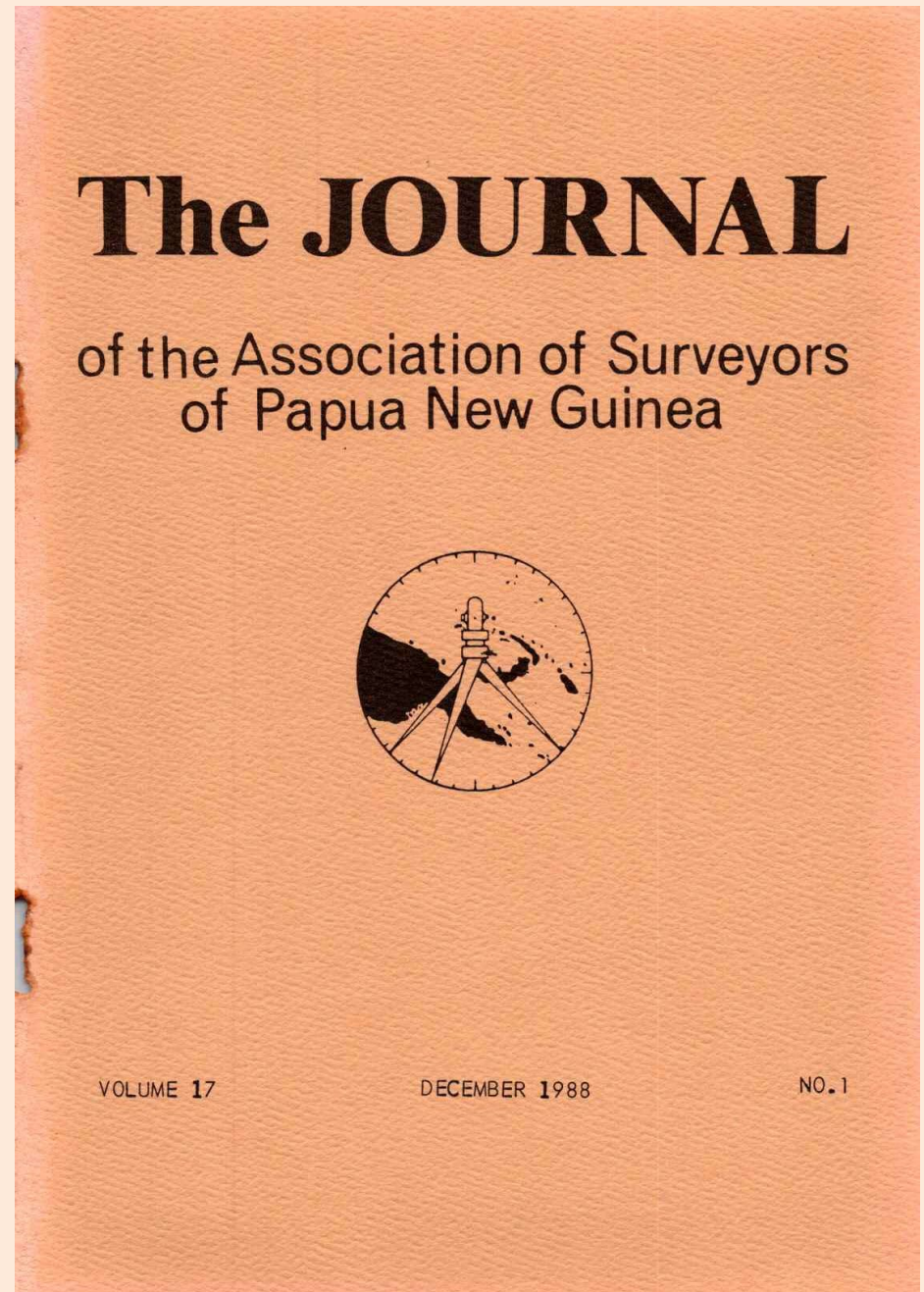


President Francis Posanau has blinded Clive Carson with Science but Clive Bassett understands all.

56.

**ASPNG
Journal
December
1988**

**Last one
available**



Survey Technology – 1982

NEW

RED2
A NEW ELECTRONIC
DISTANCE METER

SOKKISHA

THEODIST PTY LTD

Total Stations 1986

OPENS COMPLETELY NEW PERSPECTIVES



ELECTRONIC, ECONOMIC WILD T1000 THEOMAT

This new THEOMAT combines the performance features of the latest Wild electronics with those of the classic Wild theodolites. The Wild T1000 is practical, accurate, lightweight, reliable, easy to expand. And it's outstandingly cost-effective.

You benefit from these features in its absolute electronic angle-measuring system. The T1000 is instantly ready for work, needs no complicated initialization, measures continuously, and immediately updates both faces of the display as you turn or tilt the telescope.

You profit from them on a tachymetric survey, with a DISTOMAT - any DISTOMAT - and Wild GRE'S fitted, for measuring and recording at the touch of a single key.

And you benefit from them on special tasks in industry, in mining, and on the construction site; the complete range of Wild theodolite accessories fit the T1000.

Ask for your Wild T1000 documentation. Or better still, arrange for a demonstration by your local Wild agent.

Spring Garden Road, Gordons, P.O. Box 1618 Boroko. Phone: 25 6600 (3 Lines)

THEODIST PTY LTD **WILD** **FEITZ**

62.

Wild DI1000 DISTOMAT™

The EDM you can afford for every crew

a breakthrough

In size | weight | performance | price



In day-to-day work, 99% of distance measurements are less than 500 m. The need is for a small lightweight, easy-to-use EDM that measures quickly and accurately.

This is the Wild DI1000, the instrument that makes a tape redundant:

- 500 m to a single prism.
- 800 m to three prisms (1000 m in favourable conditions).
- 5 mm + 5 ppm accuracy.
- Slope, horizontal distance, height difference.

- Setting-out mode.
- Fits on all Wild theodolites, optical and electronic.

The ideal instrument for:

- Building and construction.
- Civil engineering and setting out.
- Drainage and irrigation.
- Cadastral, detail and topographic surveys.
- Mining and tunnelling.

Ask for a brochure, demonstration and offer.

Spring Garden Road, Gordons, P.O. Box 1618 Boroko. Phone: 25 6600 (3 Lines)

THEODIST PTY LTD **WILD** **FEITZ**

Introducing the SET family of Electronic Total Stations



Identical in design concept, the SET2 and SET3 electronic total stations differ only in performance and cost.

Both instruments read angles directly to one second, but the SET2 has an angular measuring accuracy of 2 seconds (0.5mgon), a distance measuring accuracy of 3mm + 2ppm and a range of up to 3.2km, while the SET3 has an angle measuring accuracy of 5 seconds (2mgon), a distance measuring accuracy of 5mm + 3ppm and a range of up to 2.8km.

Controls, built in microcomputer and recording systems are the same in the SET2 and SET3.

Accurate results with speed and ease

Fast and accurate pointing using the coaxial optics of the telescope and distance meter, simple and logical keyboards on each face, automatic tilt correction and the data out facility for field recording and computation of measurements increase productivity and cost effectiveness.

Computing in the field

Reduction, coordinates, horizontal distance between two target points, remote elevation and setting out measurements are made directly by the SET2 and SET3. Addition of the SDR2 electronic field book allows a further wide range of computations to be made and printed or plotted in the field, providing on the spot checking of topographic and traverse measurements.

THEODIST PTY LTD

Spring Garden Road, Gordons. P.O. Box 1618 Boroko. Phone: 25 6600 (3 Lines)

The 1990s – ASPNG Presidents

Steve P Low
(1992-1993)



Terence Kuniaka
(1993-1995)



Selan Pambuai
(1995-1997)

Skerry Palanga
(1997-1999)

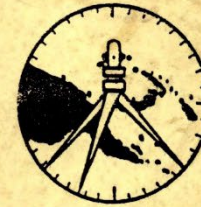


Luther Sipison
(1999-2000)



1990 Newsletter

SIPUMAN Jerome Anthony
University of Technology
Priv Mail Bag
LAE
MOROBE
P.N.G.

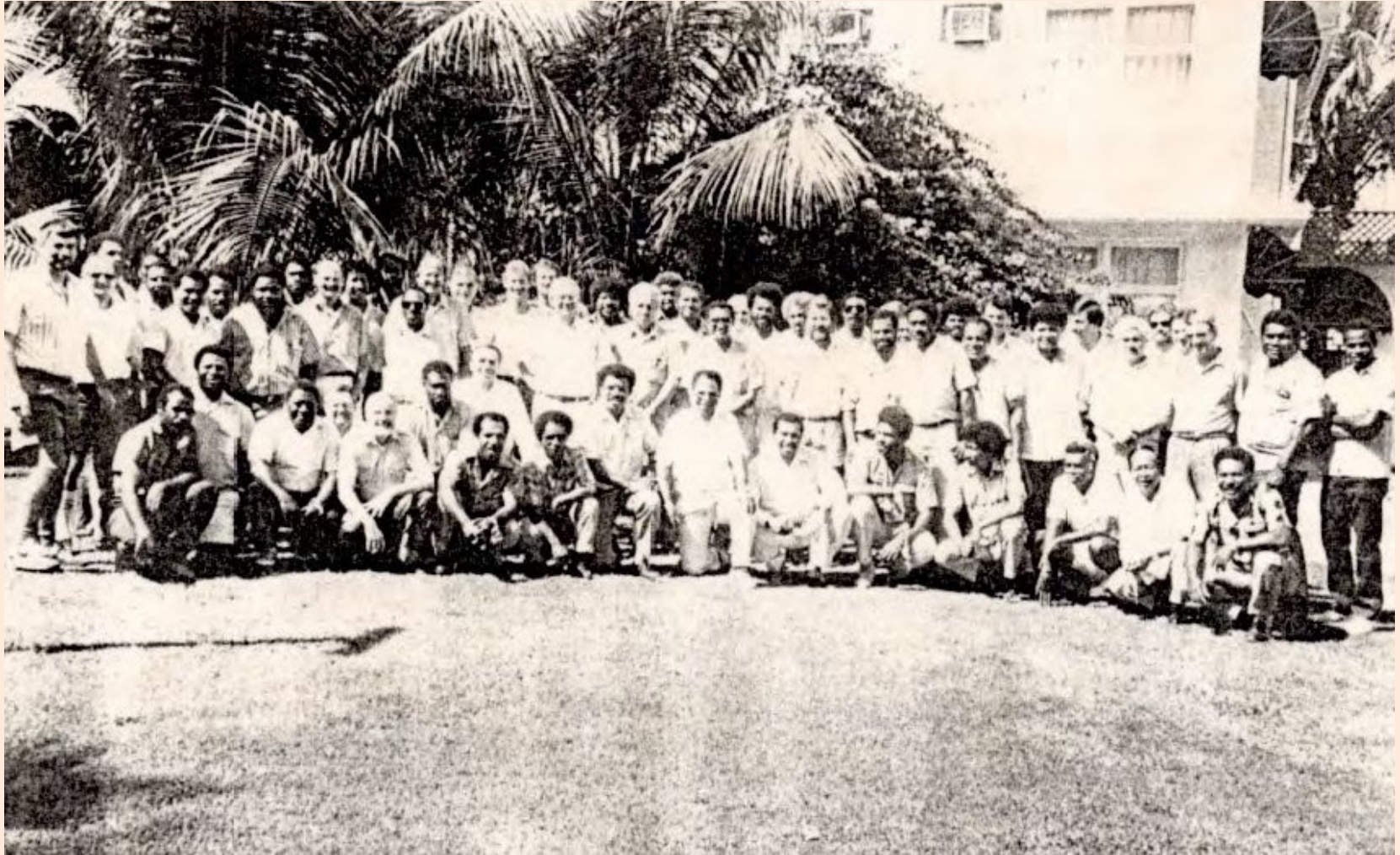


*Association of Surveyors
of
Papua New Guinea*

NEWSLETTER

**SEPTEMBER
1990**

1990 Congress - Rabaul



1990s Survey Technologies - GPS



The 2000s – ASPNG Presidents

Steve P Low
(2000-2004)



Jones Taugaloidi
(2004-2006)



Selan Pambuai?
(2006-2009)

Masang Bangindo
(2009-2012)



Tony Luben
(2012-2014)

Bill McKibben
(2014-2017)

Masang Bangindo
(2017-)



Fore-Sight Newsletter 2000-2006

Editor:
(Late) Alan Dunley

“Fore-Sight”



Quarterly Newsletter of the Association of Surveyors of P.N.G.

Year 2000 Annual General Meeting

Port Moresby : August 26th—ASPNG members gathered at the Aviat Club for the Year 2000 Annual General Meeting.

A comprehensive information package regarding this meeting had been previously issued by Council and those present were able to vote in accordance with the constitution on a number of matters.

Changes to the By-Laws included :

Constitution of Council

Office Bearers & Councilors

Qualification of Members of Council

Chairman of General Meeting

Reports were received from the Hon. Sec. and the Hon. Treasurer. It was noted that a pleasing increase in membership had occurred in the past few months. Financially, the Association remains in a healthy situation.

Election of Office Bearers : During the course of the AGM the following members were elected to Council :

President—Steve Low

Secretary—Kohu Heni

Treasurer—Rod Gould

Councilor—Luther Sipison

Councilor—Stephen Lummis



General Business : The following topics were discussed during General Business

- a proposal to setup a Lae Branch of the Association to promote student membership
- CPD courses available from Unitech, K1250 for 5 days
- the restructure at Lands Dept and Works Dept

2001 Congress : The 2001 Survey Congress will be held in Port Moresby and our thanks to Michael Larmer in volunteering his services as Congress Manager.

Our thanks also to **The Galley Restaurant** in catering for the Annual General Meeting.

Year 2000 Combined Conference

LAE : July 5th—July 7th saw the gathering of 126 delegates to attend “Combined Conference 2000” - a meeting involving the Association of Surveyors of Papua New Guinea, the PNG Institute of Valuers & Land Administrators and the PNG Institute of Cartographers.

Organised by the Dept of Surveying & Land Studies at UNITECH, this function was held at the prestigious Lae International Hotel.

Three formal papers were read while the majority of the program was devoted to practical workshops including such topics as :

- * Privatisation in PNG
- * Education and Continuing Professional Development in PNG

(Continued page 3)

Volume 1, Issue 1
September, 2000

COMING EVENTS :

- * December 03—06, Sydney
Mapping Sciences Institute
Australia—National Conference
“Beyond 2000 : Spatial Business—
Daring to Change”

INSIDE THIS ISSUE :

Book Review : “Masta Mak” The Land Surveyors of Papua New Guinea	2
No Shortage of PSM’s in PNG	3
“Name the Newsletter” An invitation to Members	3
Surveyors CPD Quiz	3
News of Members	4
CASH PRIZE—Name the theme for Congress 2001	4
Editorial Comment	4

2001 Annual Dinner Port Moresby



Above (L to R) : Malcolm McCoy (President ISA), Steve Low (President ASPNG), Micahael Larmer (Congress Manager), Prime Minister Sir Mekere Morauta author James Sinclair, John Brock (FISA) and Fred Pratt (FASPNG).

Right (L to R) : Graham Mathe-
son newly elected Hon. Fellow
ASPNG, Dickson Taunagita,
Hon. Secretary ASPNG, and
Kisakou Pochapon, PNG's 1st
national Surveyor—General

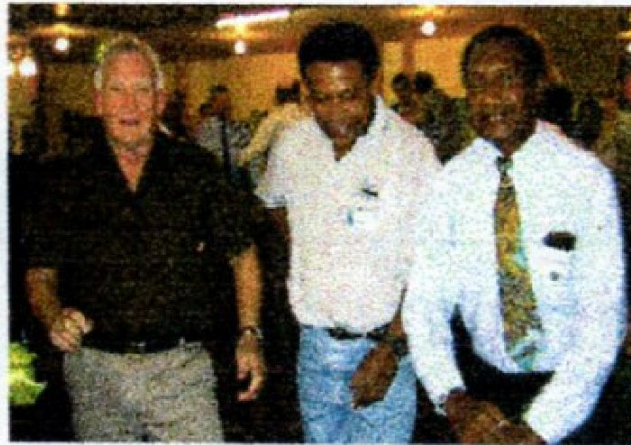
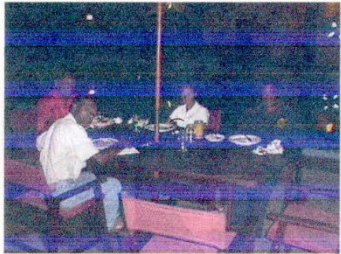


Photo Review : 2002 Survey Congress

Digital photographs courtesy of Mr. Nick Moon, Function Manager, Lae International Hotel



Merlyn Alaroz and friends at one of the quieter tables



Merlyn Alaroz proving she's a little camera-shy after all



A glass of wine or two made the B.B.Q. taste even better



Part of the organising committee ... and their smiles helped the Congress to be so successful



Charles Ouba and friends enjoying the final evening of the Congress



Friendly staff from the Lae International Hotel ensured the evening was a great success.



Susto Raepa talking to friends (and proving not all surveyors drink beer)



The 'Haus Wind' provided a quiet getaway area for a few of the troops as well as providing shelter from the occasional shower.

Photo Review : 2002 Survey Congress

Digital photographs courtesy of Mr. Nick Moon, Function Manager, Lae International Hotel



2002 Congress Manager Luther Sipson, a job well done !!!



Re-elected for a 4th term, ASPNG President Steve Low relaxes with surves or Bill McKibben



R to L : Lands Secretary Tony Luben, Nou Tau, Joe Yapakae, Bruce Durom, and Somo Sasenu



R to L : Hon Sae Dickson Tanaugita shares a laugh with Bruce Durom, Raymond Bure (Pres. PNGIC) and Alan Dunley



Newly elected ASPNG Councilor Jones Taugaloidi enjoying the 'Farewell Bar B Que meal with friends.



Joseph Kunda and friends taking time out to give a big smile for the cameraman



L to R : C.R. Kennedy Survey Rep Ian Truscott, Pres Steve Low, Fellow Michael Larmer, Bill McKibben and Alan Dunley



Vaki Vailala & friends 'tucking-in' to the B.B.Q. kai

2003 Annual Dinner



James Murray & Ian Young, plotting a coup



There's that man again Congress Manager's seem to enjoy themselves after all the hard work



Peter Swan - President of the ISA, chats with C.R. Kennedy's Ian Truscott



ASPNG President Steve Low shares a laugh with Terrence Kuninka when awarding him "The Paddle"



Francis Posenau taking the opportunity to emphasise a point with



Joseph Kanawe (right) enjoying a glass of wine with a friend at the Annual Dinner



L to R : — — Genio Dominic, Rava Mase



Theodist's Shawn Pini with Measure-Tech's Peter Ludlow - Annual General Dinner



Merlyn Alacroz, Marvin Pasaiwa, Alan Dunley and Shawn Pini posing for the camera



Michael Larmer assuring Luther Sipsion that being a Congress Manager is fun - good luck Luther in 2004

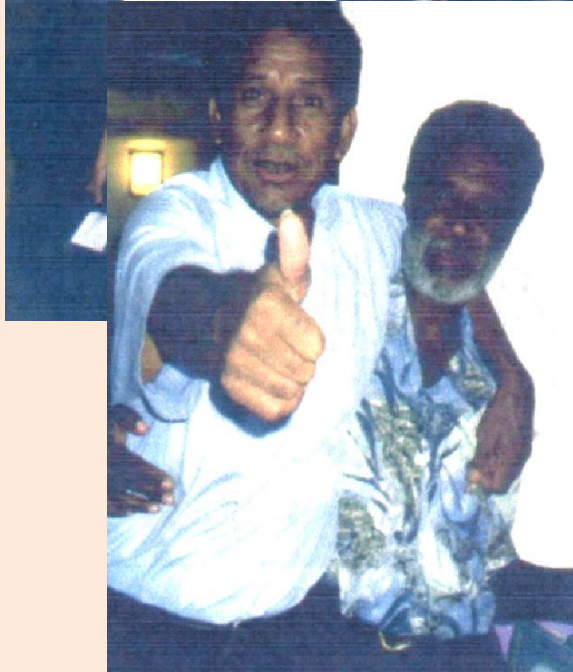


Overseas and local delegates warming to the social action after a hard day with the Technical Papers



Friends one and all, enjoying a quite ale at the indoor Farwell Bar.B.Que

2003 Annual Dinner



There's that man again Congress Manager's seem to enjoy themselves after all the hard work



Peter Swan - President of the ISA, chats with C.R. Kennedy's Ian Truscott



ASPNG President Steve Low shares a laugh with Terrence Kuniaka when awarding him "The Paddle"



Francis Posenau taking the opportunity to emphasise a point with



Joseph Kanawe (right) enjoying a glass of wine with a friend at the Annual Dinner



L to R : *Geno Dominic, Rava Mase*



Theodist's Shawn Pini with Measure-Tech's Peter Ludlow - Annual General Dinner



Merlyn Alacroz, Marvin Pasaiwa, Alan Dunley and Shawn Pini posing for the camera



Michael Larmer assuring Luther Sipison that being a Congress Manager is fun - good luck Luther in 2004



Overseas and local delegates warming to the social action after a hard day with the Technical Papers



Friends one and all, enjoying a quite ale at the indoor Farwell Bar B. Que



2004 Annual Dinner

Steve Low,
Michael Larmer
and Ian Truscott



Richard Nawara, Sibona
and Shaun Pini



ASPNG – 2017 Congress Alotau (Visit to East Cape)



2000s Survey Technologies



Collaboration with Affiliated Surveying Organisations ASPNG – ISA/SSSI (Australia) 2016



The Geospatial Council of Australia entered into liquidation on 21st August 2025. All skills migration assessments and certification applications that were lodged up until this date, will be processed.

Please click [HERE](#) to read a statement from the Board.

ASPNG is now the oldest surveyors' body in the Pacific using its original name



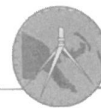
SSSI – ASPNG CO-OPERATION AGREEMENT

BETWEEN

SURVEYING AND SPATIAL SCIENCES INSTITUTE
LIMITED (Australia)

AND

THE ASSOCIATION OF SURVEYORS OF PAPUA NEW
GUINEA



The Association of Surveyors
of
Papua New Guinea Inc.



FIG – International Federation of Surveyors



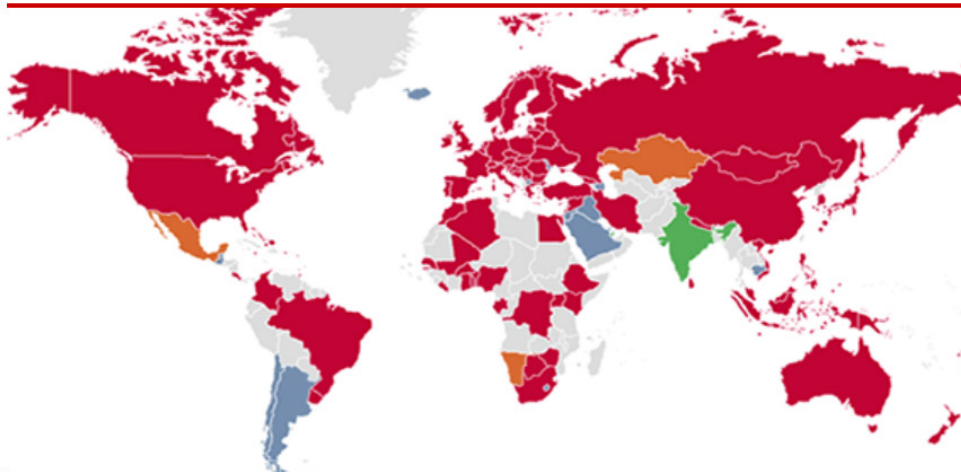
International Federation of Surveyors
Fédération Internationale des Géomètres
Internationale Vereinigung der Vermessungsingenieure

ENHANCED B

Home News Organisation **Members** Resources Partners Foundation Events About FIG

FIG Members Benefits Associations Corporates Academics Affiliates Correspondents Honorary Presidents Hon

Home > Members



PALESTINE, STATE OF



Licensed Surveyors Association in Palestine

President: George Dabbah

Member no: MA-10065

PAPUA NEW GUINEA



Association of Surveyors of Papua New Guinea
(ASPNG)

President: Masang Bangindo

FIG Representative: Masang Bangindo

Member no: MA-10066

PHILIPPINES



Geodetic Engineers of the Philippines, Inc.

President: Raymund Arnold S. Alberto

FIG Representative: Carlos P. Dizon; Ponciano G. Valdez, Jr.

Member no: MA-10107



57th ASPNG Survey Congress, Lamana Hotel, Port Moresby, 15-17 October 2025.

ASPNG Web-site & FB 2010 - now



The Association of Surveyors of Papua New Guinea inc.

- Home
- Contact
- Membership
- Members
- Firms
- ASPNG Congress
- Publications
- Technical Support
- Education
- Links

ASPNG Sponsors

THEODIST LTD
SURVEY SOLUTIONS



Aptella
AUTOMATION +
POSITIONING TECH

Welcome to the web-site of the
Association of Surveyors of Papua New Guinea (ASPNG)



ASPNG at East Cape, 2017

Upcoming Events

57th
ASPNG Congress

facebook

Log In



The Association of Surveyors of PNG

Public group · 2.7K members

Join group

- About
- Discussion
- Events
- Media

<https://www.aspng.org/publications.htm>



57th ASPNG Survey Congress, Lamana Hotel, Port Moresby, 15-17 October 2025.

ASPNG into the future - Foresight

Fully embrace all geospatial professionals

More engagement with our neighbouring professional bodies (MoA etc.)

Reinstate a digital Journal or Newsletter rather than rely on Facebook and other social media

Promote establishment of a national surveying & mapping museum

Secure archive of documents and ASPNG records

Refresh of the web-site, social media (Establish a LinkedIn page?)

Specialist certification for surveyors and geospatial professionals

Supporting PNGUoT, DLPP and Surveyors Board

Permanent secretariat (administrative officer and small office or workspace with printer, internet, scanner)

The Future Our Students!

